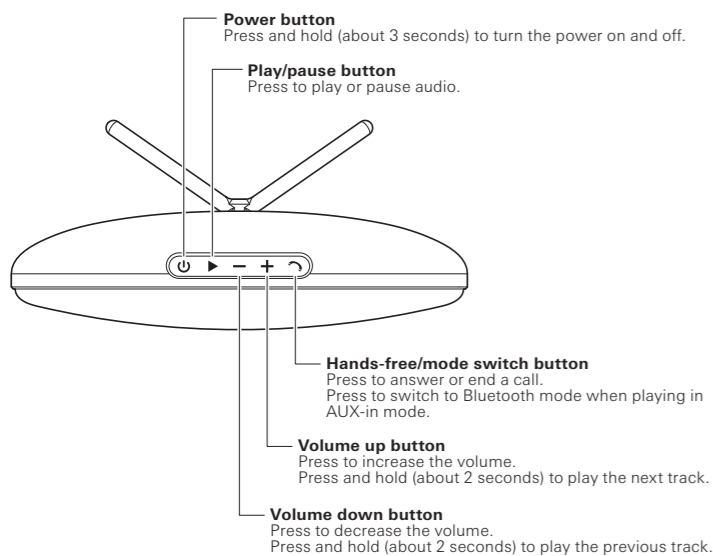
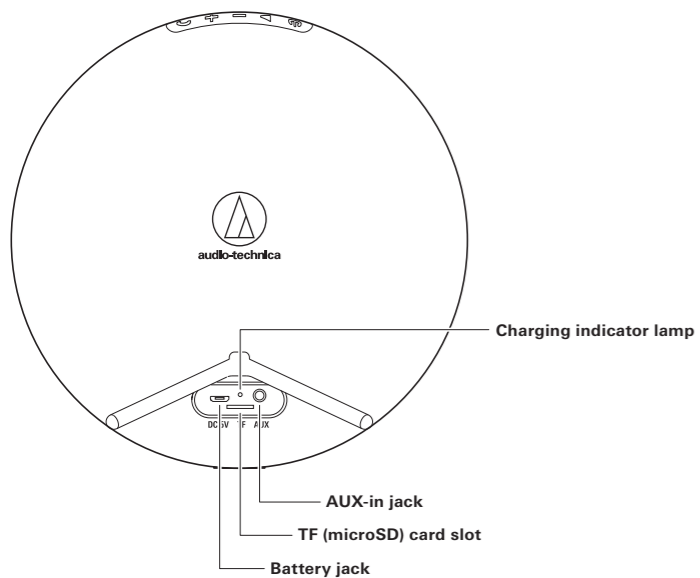
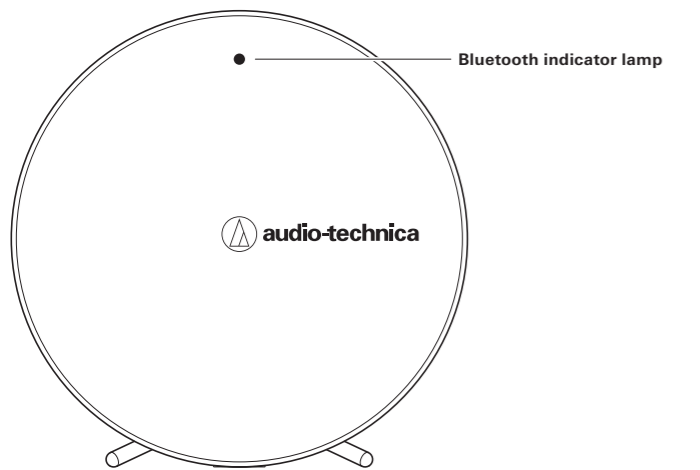
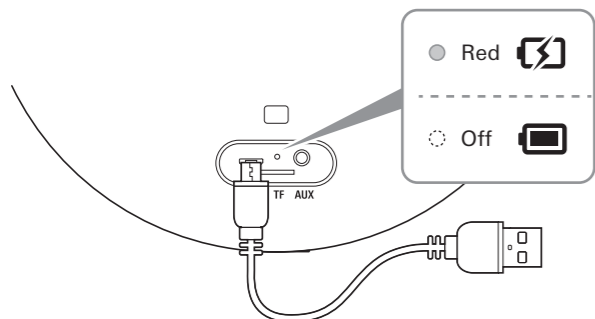




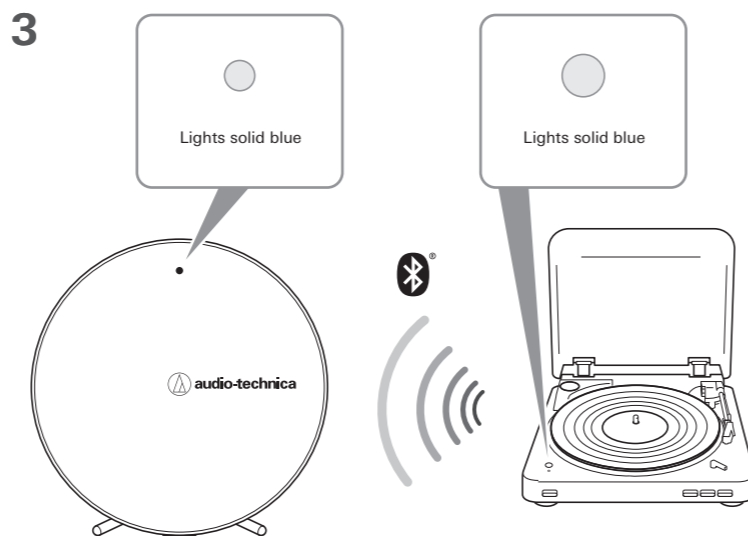
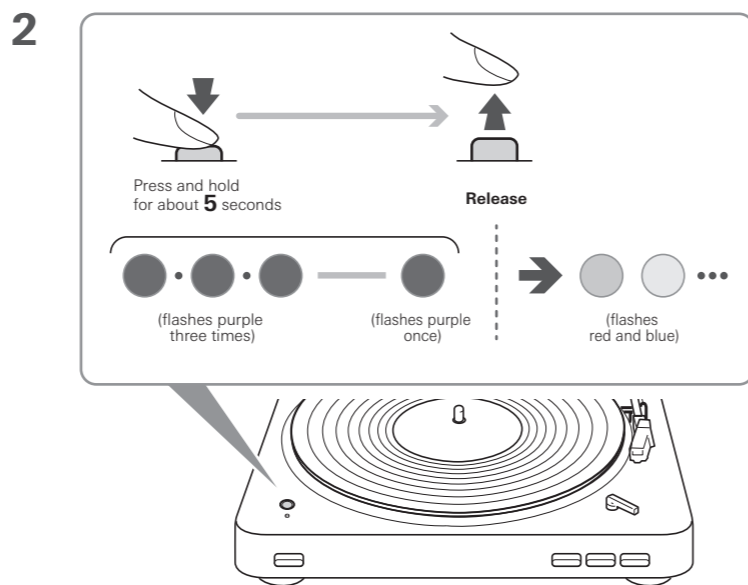
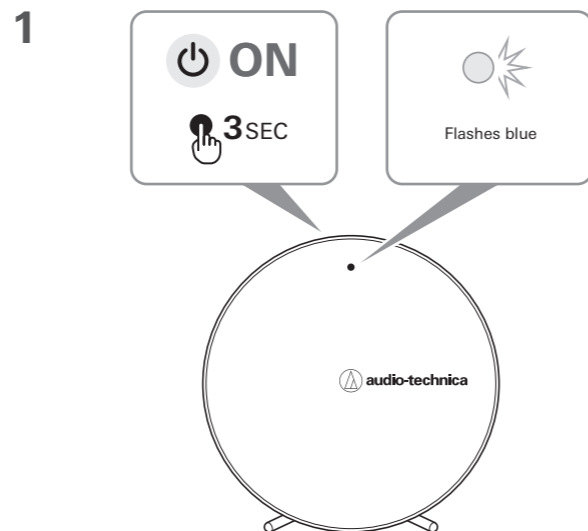
■ Part names and functions



■ Charging the battery



■ Pairing



- The wireless turntable stays in the pairing mode for 30 seconds.
- If pairing is not properly completed, follow the above steps again from the beginning.
- If both devices are paired and lights are solid blue but no audio is heard, press the play/pause button on either device to activate audio.

■ Help

For more information on how to use this product, visit the Audio-Technica website at the URL listed below and contained in the QR code.



www.audio-technica.com

The Bluetooth® word mark and logos are owned by Bluetooth SIG, Inc. and any use of such marks by Audio-Technica Corporation is under license. All other trademarks are property of their respective owners.

Communication specifications/Spécifications pour la communication/Kommunikationsdaten/ Specifiche di comunicazione/Especificaciones de comunicación/ Especificações de comunicação/Технические характеристики связи	
RF output/Sortie des radiofréquences/HF-Ausgang/ Uscita RF/Salida de radiofrecuencia/ Potência de saída de radiofrequência/Выходная мощность РЧ	1.3 mW EIRP
Frequency band/Bande de fréquence/Frequenzband/ Banda di frequenza/Banda de frecuencia/ Banda de frequências/Диапазон частот	2.402 GHz - 2.480 GHz
Modulation type/Type de modulation/Modulationstyp/ Tipo di modulazione/Tipo de modulaci3n/ Tipo de modulaç3o/Тип модуляци	GFSK, Pi/4DPSK, 8DPSK

**Audio-Technica Corporation**  
2-46-1 Nishi-naruse, Machida, Tokyo 194-8666, Japan  
www.audio-technica.co.jp  
©2018 Audio-Technica Corporation  
Global Support Contact: www.at-globalsupport.com

162501180-01-01 ver.1 2018.07.01