

TURNTABLE QUICK START GUIDE

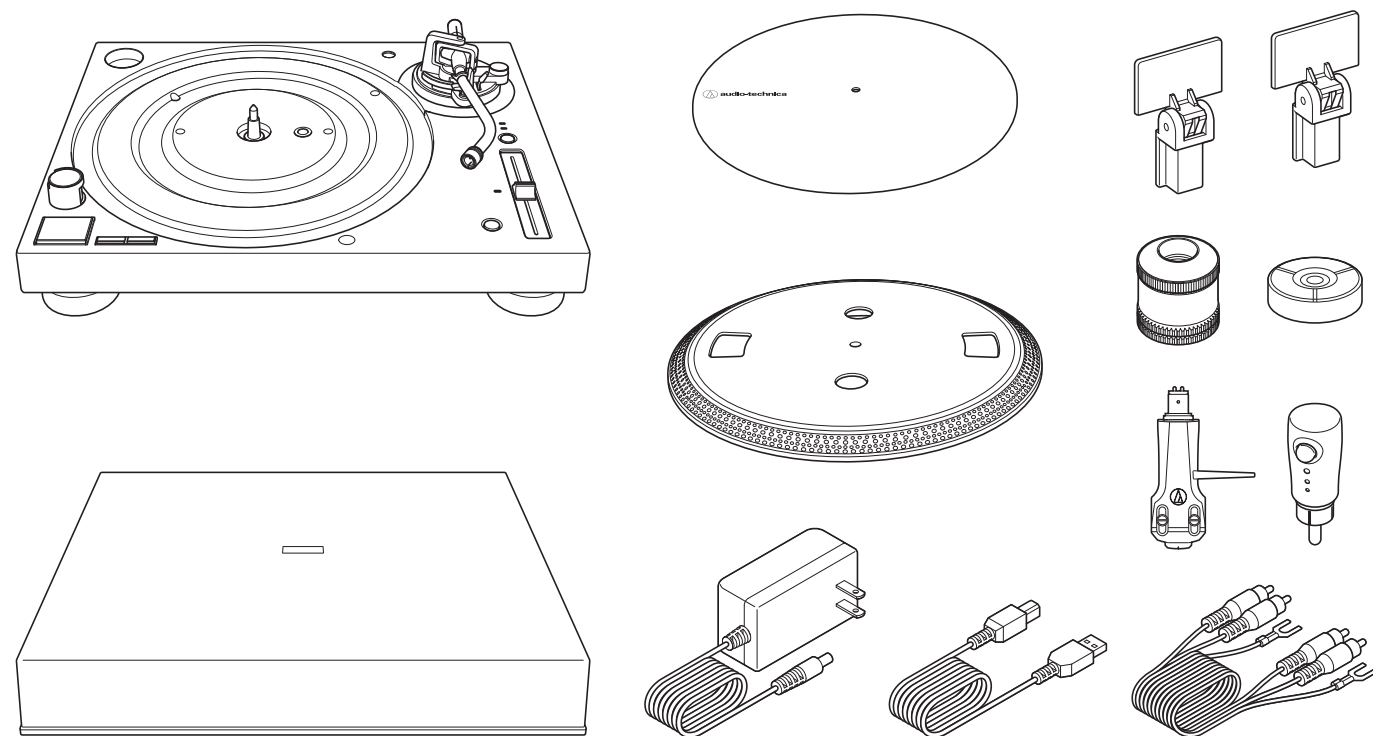
AT-LP120XUSB

INFORMATION

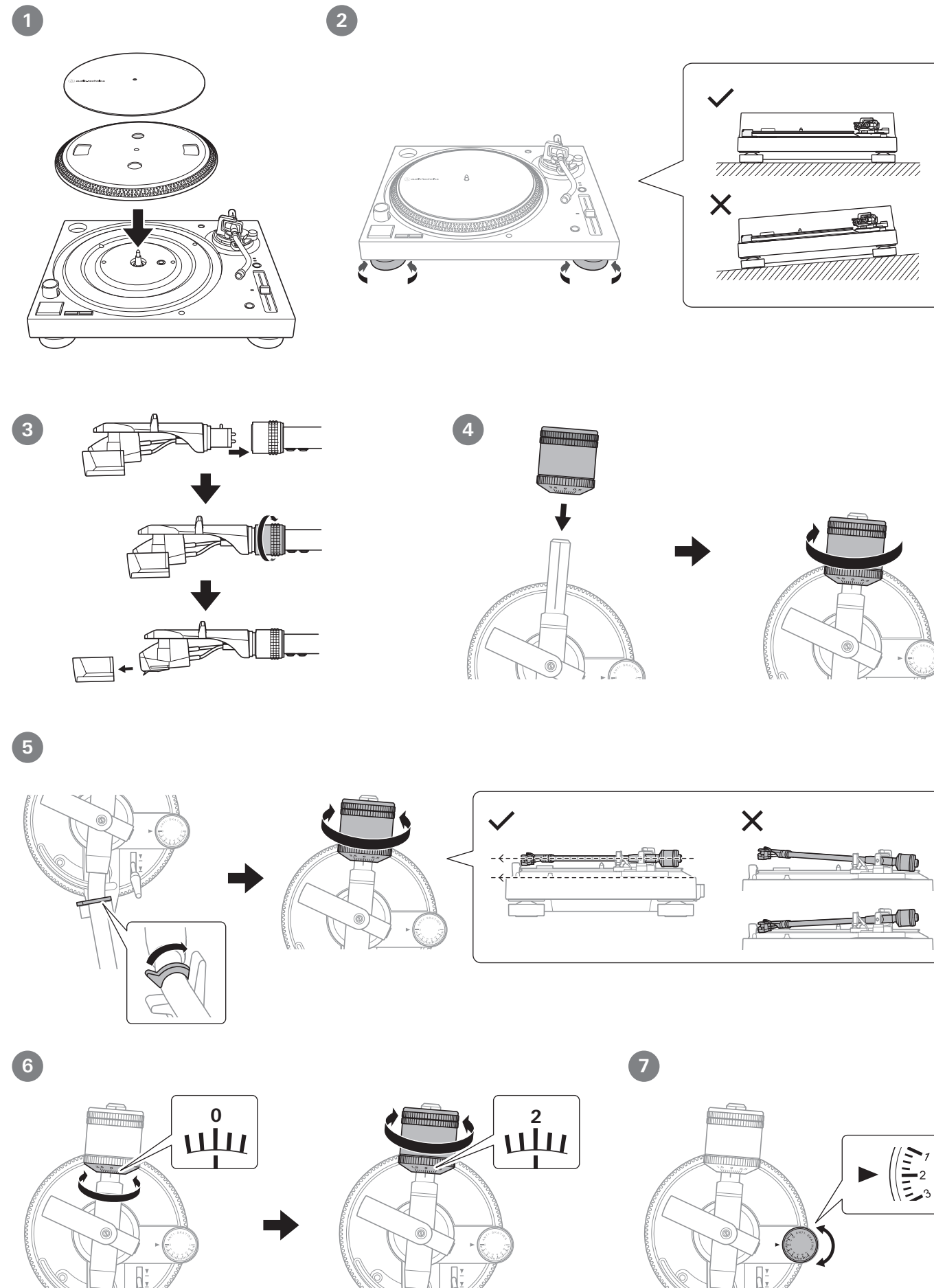
取扱説明書
User Manual
Manuel de l'utilisateur
Bedienungsanleitung
Manuale dell'utente
Manual de usuario
Manual do Usuário
Руководство пользователя
用戶手冊
使用説明書
사용설명서



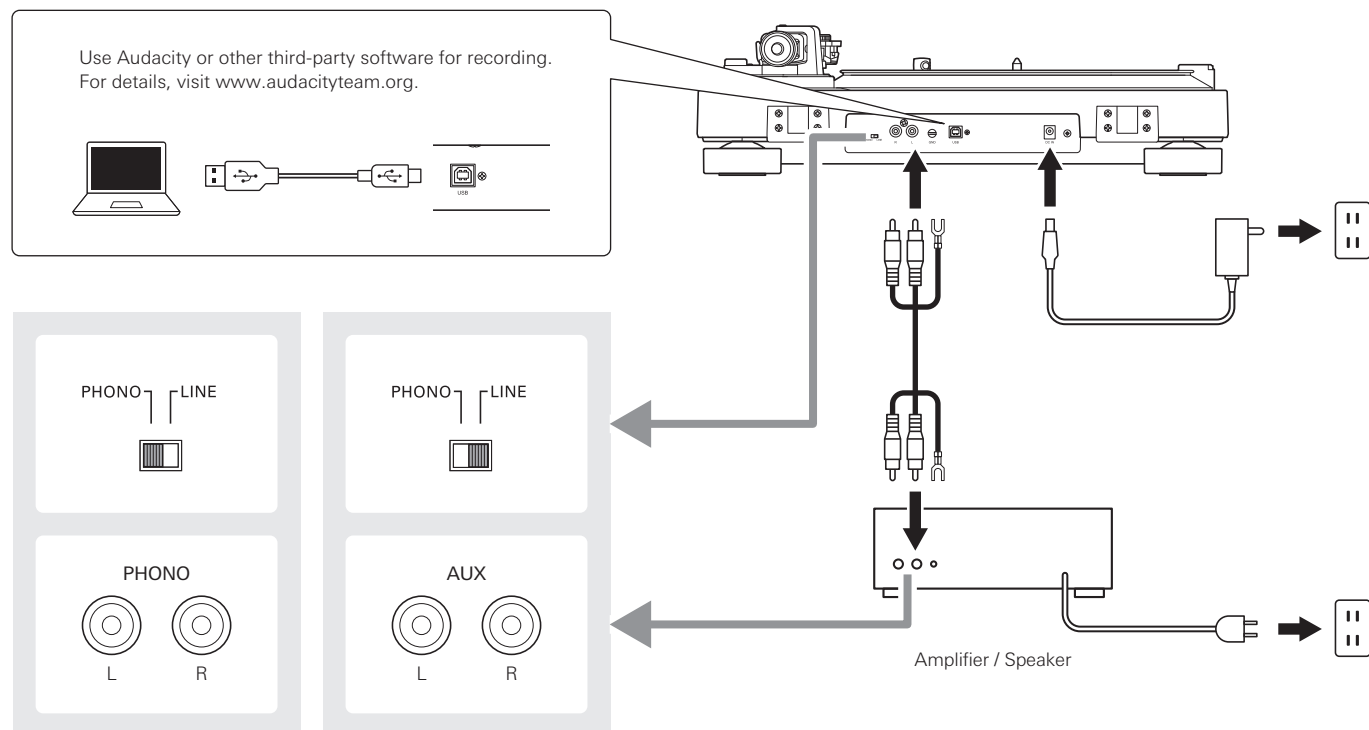
CONTENTS



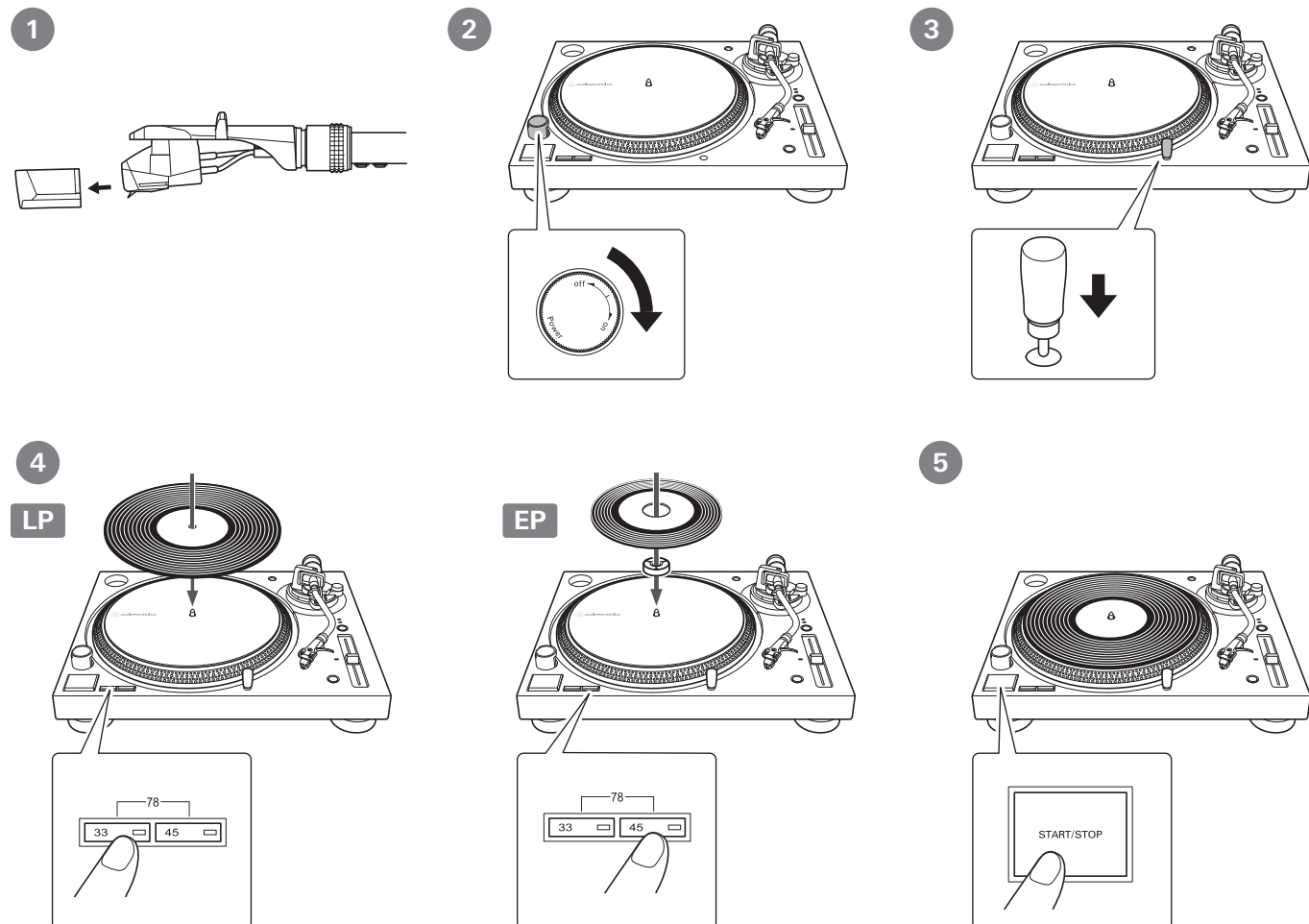
PREPARATION



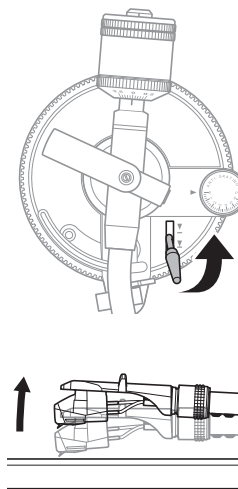
CONNECTION



PLAY



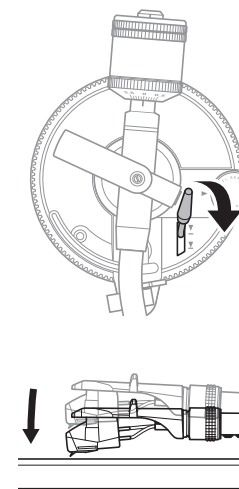
6



7

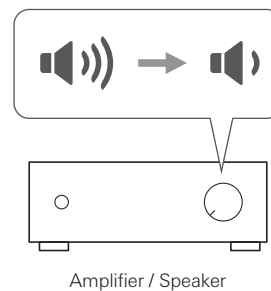


8

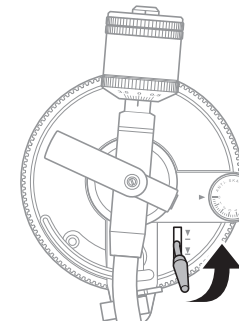


STOP

1



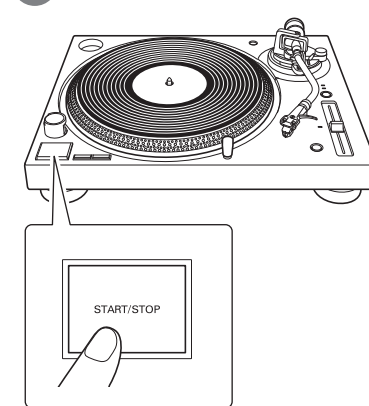
2



3



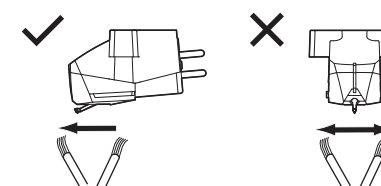
4



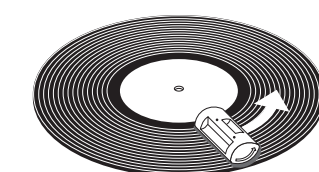
CLEANING

For details about turntable and cartridge care accessories, visit www.audio-technica.com.

Stylus



Record



株式会社オーディオテクニカ

〒194-8666 東京都町田市西成瀬2-46-1

Audio-Technica Corporation

2-46-1 Nishi-naruse, Machida, Tokyo 194-8666, Japan

www.audio-technica.co.jp

©2018 Audio-Technica Corporation

162501210-01-01 ver.1 2018.11.01